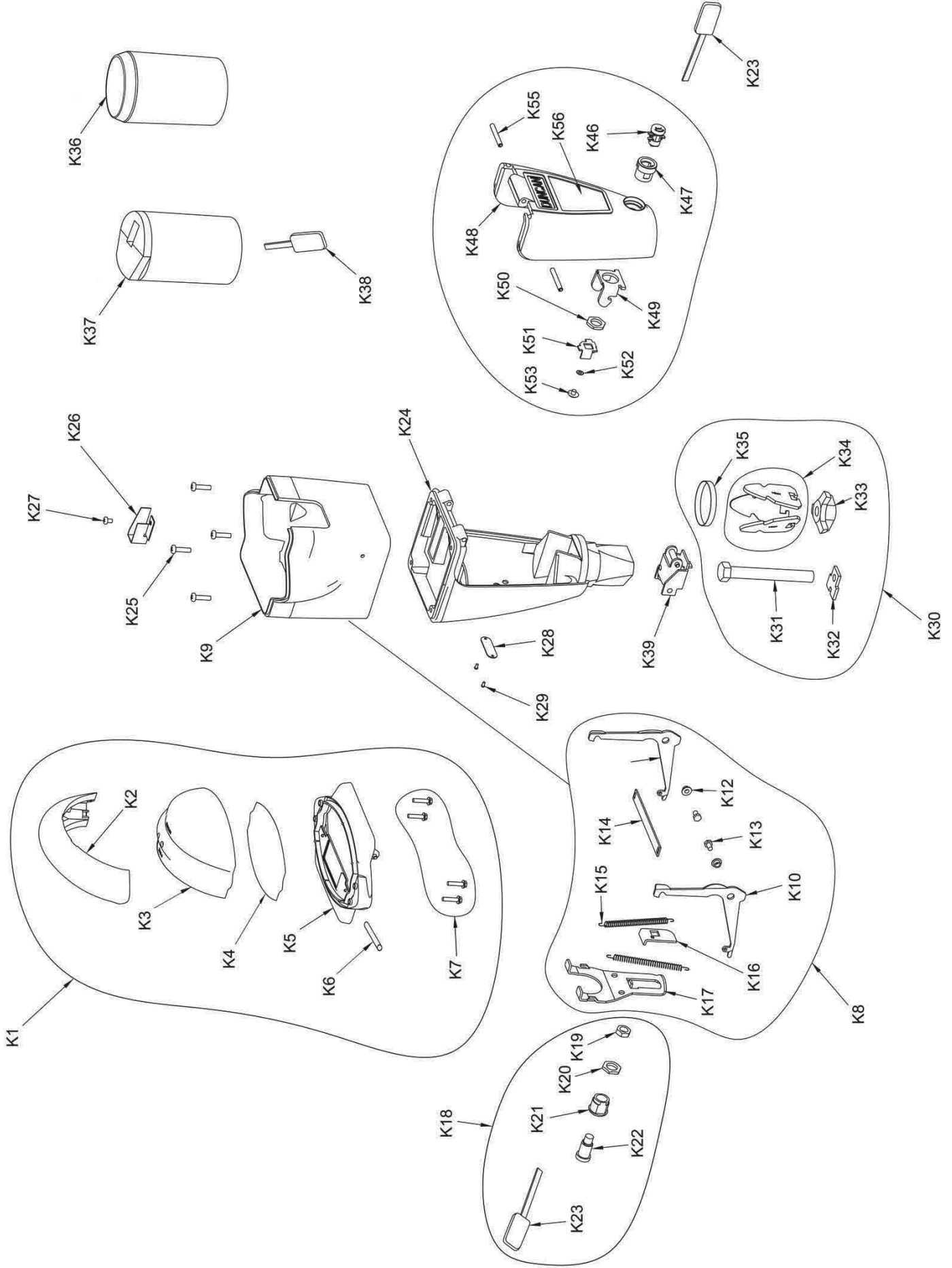


DUNCAN PARKING TECHNOLOGIES MODEL 76 SINGLE SPACE PARKING METER HOUSING PARTS LIST K



**DUNCAN PARKING TECHNOLOGIES, INC.**  
**MODEL 76 SINGLE PARKING METER HOUSING**  
**PARTS PRICE LIST "K"**

<b>REF NO.</b>	<b>PART NUMBER</b>	<b>DESCRIPTION</b>
K1	<b>62032-1</b> **	CAP, HOUSING ASSEMBLY WITH ROUND DOME
K2	component parts:	<b>2043-1</b> Strap, Housing Cap
K3		<b>8125</b> Dome, Round
K3		<b>8130</b> Dome, Next Gen
K7		<b>2034-1</b> Screw, Housing Cap
K5		<b>66032</b> Cap, Housing Sub-Assembly
K6	component parts:	<b>2033</b> Hing Pin
K4		<b>2395</b> Gasket, Dome
K1	<b>62032-2</b> **	CAP, HOUSING ASSEMBLY WITH FLAT DOME (OTHER PARTS SAME AS 62032-1)
K8	<b>62199-1</b> **	MECHANISM, HOUSING SUB ASSEMBLY
K9	component parts:	<b>6082-1</b> Housing, Mechanism
K10		<b>2012</b> Link, Right Locking
K11		<b>2013</b> Link, Left Locking
K12		<b>9211</b> Washer, shoulder
K13		<b>2019</b> Screw, Locking Link
K14	<b>2010</b>	Bar, Locking Link
K15	<b>2021</b>	Springs, Locking Link Return
K16	<b>2009</b>	Cam, Housing Lock
K17	<b>2011</b>	Link, Back Housing Lock
K18	<b>2054-H</b>	Lock Assy, Housing- Further Definition Required
K19	component parts:	<b>2016</b> Nut
K20		<b>1927</b> Jamb Nut
K21		<b>2394-Z</b> Lock Barrel
K22		<b>63325</b> Lock Assembly, DE- Further Definition Required
K23	<b>62058-2</b>	Key, Short, Brass- Further Definition Required
K24	<b>8050-2</b> **	Housing, Zinc Lower Unit Model 76 Single
K25	<b>7000-1</b>	SCREW, 10-24 X 3/4 PFHS
K26	<b>3382</b>	Guide, Coin
K27	<b>9043-1</b>	SCREW, 8-32 5/16 SCREW
K28	<b>1705</b>	Plate, Serial Number-Further Definition Required
K29	<b>1918</b>	Screw, Serial Plates
K30	<b>63048</b>	FASTENER ASSEMBLY
K31	component parts:	<b>3048</b> Bolt Expander
K32		<b>3020</b> Washer
K33		<b>3005</b> Nut Expander
K34		<b>H715-1</b> Jaw Expander
K36	<b>2065-4</b>	Coin Box, Open
K37	<b>69200-101</b>	Coin Box, Sealed, DE-Further Definition Required
K38	<b>2302-32</b>	Key, Coin Box, DE <b>SW</b> Brass-Further Definition Required
K38a	<b>2302-33</b>	Key, Coin Box, DE <b>DW</b> Brass-Further Definition Required
K37	<b>69200-110</b>	Coin Box, Sealed, Illinois- Further Definition Required
K38	<b>2302</b>	Key, Coin box, Illinois- Further Definition Required
K39	<b>63017</b>	Bracket Assembly
K45	<b>63001-2</b> **	Door Assembly with DE Lock for M76Housing
K46	component parts:	<b>63022</b> Lock Assy DE SW-Further Definition Required
K47		<b>3016-Z</b> Lock Barrel
K48		<b>3001-12</b> Door, Lower Housing Model 76
K49		<b>3015</b> Latch
K50		<b>1927</b> Jamb Nut
K51		<b>3002</b> Cam, Door De Lock
K52		<b>1006-5</b> Lockwasher
K53		<b>3023</b> Screw
K54		<b>2049</b> Screw
K55		<b>2048</b> Hinge Pin
K56	<b>2330</b>	Decal - Door Instruction Plate - Further Definition Required