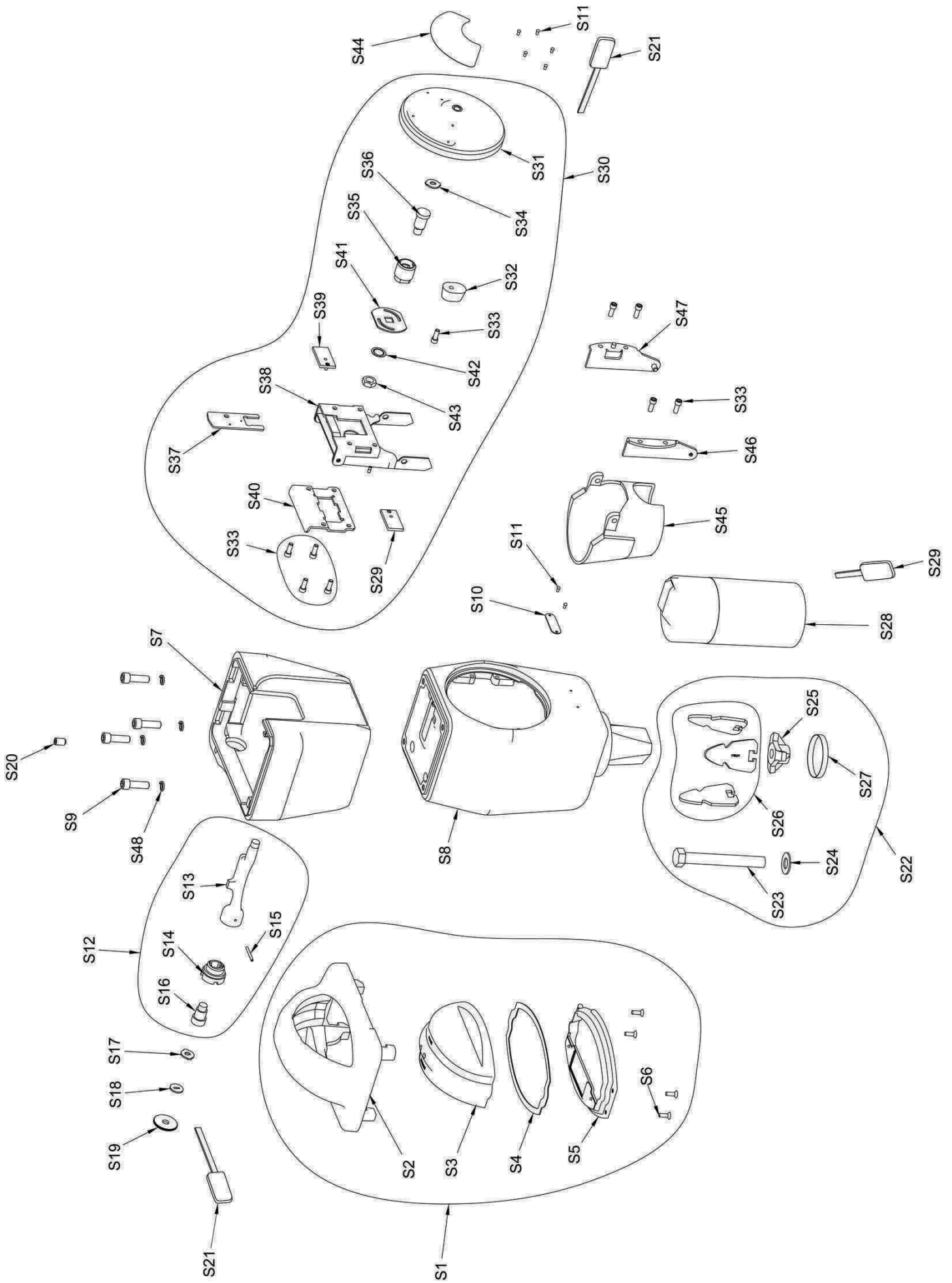


DUNCAN PARKING TECHNOLOGIES MODEL 95 SINGLE SPACE PARKING METER HOUSING  
 PARTS LIST "S"



**DUNCAN PARKING TECHNOLOGIES, INC.**  
**MODEL 95 SINGLE PARKING METER HOUSING**  
**PARTS PRICE LIST "S"**

<b>REF NO.</b>	<b>PART NUMBER</b>	<b>DESCRIPTION</b>
S1	<b>79016</b> **	Cap, Iron Upper Housing Assembly, Round Dome
S2	component parts:	<b>9016-2</b> Cap, Iron, Upper Housing
S3		<b>8125</b> Dome, Round
S3		<b>8130</b> Dome, Next Gen
S4		<b>9018</b> Gasket, Dome
S5		<b>79019</b> Retainer, Dome
S6		<b>1046-30</b> Screw
S1	<b>79016-4</b> **	Cap, Iron Upper Housing Assembly, Flat Dome (OTHER PARTS SAME AS 79016)
S7	<b>9017-6</b> **	Housing, Iron, Mech
S8	<b>9040-5</b> **	Housing, Iron, Lower Unit Model 95 Single
S9	<b>9025-9</b>	Bolt, Hex Socket
S48	<b>1011-1</b>	Lockwasher , 5/16
S10	<b>1705</b>	Plate, Serial Number-Further Definition Required
S11	<b>1918</b>	Screw, Serial Plates
S12	<b>79001-1</b>	Rod, Mech Locking Assembly- Further Definition Required
S13	component parts:	<b>9020</b> Rod, Locking
S14		<b>9023-1</b> Barrel, Lock
S15		<b>9024</b> Pin, Roll
S16		<b>75030</b> Lock, DE, Mech-Further Definition Required
S17	<b>3381-1</b>	Plug, Lock Shield
S18	<b>3327</b>	Plug, Lock Shield, Secondary
S19	<b>9022</b>	Plug, Lock Shield, Primary
S20	<b>9027-1</b>	Screw
S49	<b>9095</b>	Bar Locking Shield
S21	<b>62058-4</b>	Key, Long, Brass- Further Definition Required
S22	<b>63035</b>	FASTENER ASSEMBLY
S23	component parts:	<b>3048</b> Bolt, Expander
S24		<b>9003</b> Washer
S25		<b>3005</b> Nut, Expander
S26		<b>H715-1</b> Jaw, Expander
S28	<b>69208</b>	Coin Box, Sealed, DE- Further Definition Required
S29	<b>2302-2</b>	Key, Coin Box, DE SW Brass-Further Definition Required
S28	<b>69208-2</b>	Coin Box, Sealed, Illinois- Further Definition Required
S29	<b>2302</b>	Key, Coin Box, Illinois- Further Definition Required
S30	<b>73378-226</b> **	DOOR ASSEMBLY
S31	component parts:	<b>73345-10</b> Door, Lower Iron Housing
S32		<b>3308</b> Bumper, Rubber
S33		<b>3331-2</b> SCREW, 10-32 X 1/2 SCHS
S34		<b>3381</b> Plug, Lock Shield
S35		<b>3317-Z1</b> Barrel, Lock
S36		<b>63325</b> Lock Assembly, DE- Further Definition Required
S37		<b>3378</b> Retainer, lock
S38		<b>73372</b> Link & Bracket Door Assembly
S39		<b>73341</b> Bolt, Lock Assembly
S40		<b>3326-1</b> Bracket, Retainer Lock Bolt
S41		<b>3302</b> Cam, Lock
S42		<b>3329</b> Lockwasher
S43		<b>2016</b> Nut
S44	<b>3350</b>	Decal- Door Instruction Plate- Further Definition Required
S45	<b>73373</b>	Retainer, Coin Box Assembly
S46	<b>73371-1</b>	Bracket, Left, Door Assembly
S47	<b>73371-2</b>	Bracket, Right, Door Assembly
S33	<b>3331-2</b>	Screw, 10-32 X 1/2
<b>FOR METERS MANUFACTURED WITH LORI LOCK (SPECIFY COMBINATION):</b>		
	<b>69110</b>	Lock, Lori- Further Definition Required
	<b>9111</b>	Key, Lori Lock- Further Definition Required