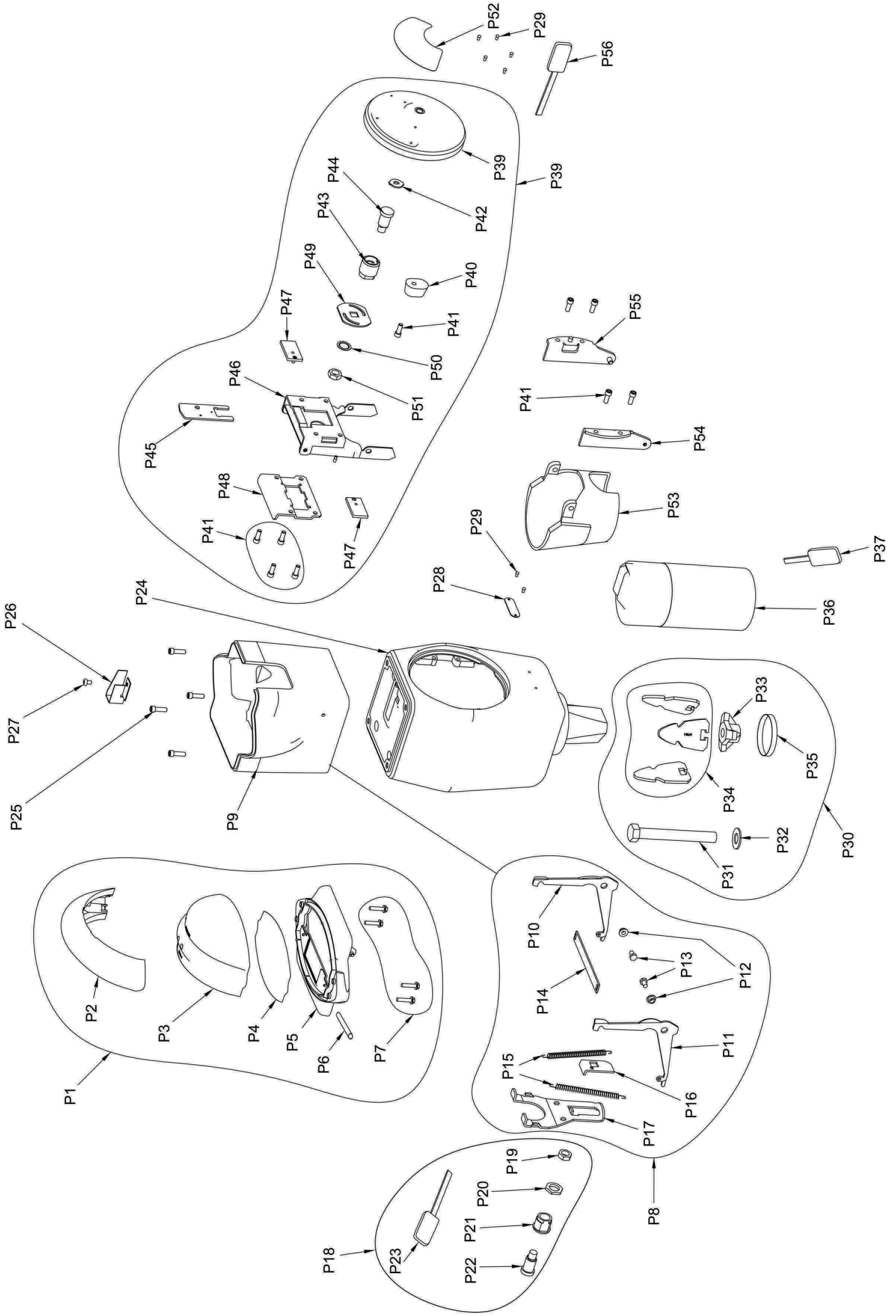


DUNCAN PARKING TECHNOLOGIES MODEL 90 SINGLE SPACE PARKING METER HOUSING PARTS LIST "p"



DUNCAN PARKING TECHNOLOGIES, INC.
MODEL 90 SINGLE PARKING METER HOUSING
PARTS PRICE LIST "P"

<u>REF NO.</u>	<u>PART NUMBER</u>	<u>DESCRIPTION</u>
P1	62032-1 **	CAP, HOUSING ASSEMBLY WITH ROUND DOME
P2	component parts:	2043-1 Strap, Housing Cap
P3		8125 Dome, Round
P3		8130 Dome, Next Gen
P7		2034-1 Screw, Housing Cap
P5		66032 Cap, Housing Sub-Assembly
P6	component parts:	2033 Hing Pin
P4		2395 Gasket, Dome
P1	62032-2 **	CAP, HOUSING ASSEMBLY WITH FLAT DOME (OTHER PARTS SAME AS 62032-1)
P8	62199-1 **	MECHANISM, HOUSING SUB ASSEMBLY
P9	component parts:	6082-1 Housing, Mechanism
P10		2012 Link, Right Locking
P11		2013 Link, Left Locking
P12		9211 Washer, shoulder
P13		2019 Screw, Locking Link
P14	2010	Bar, Locking Link
P15	2021	Springs, Locking Link Return
P16	2009	Cam, Housing Lock
P17	2011	Link, Back Housing Lock
P18	2054-H	Lock Assy, Housing- Further Definition Required
P19	component parts:	2016 Nut
P20		1927 Jamb Nut
P21		2394-Z Lock Barrel
P22		63325 Lock Assembly, DE- Further Definition Required
P23	62058-2	Key, Mech, Brass- Further Definition Required
P24	9040-1 **	Housing, Iron, Lower Unit Model 90 Single
P25	3331-3	Screw, Socket Head Cap
P26	3382	Guide, Coin
P27	9043-1	Screw, Coin Guide
P28	1705	Plate, Serial Number-Further Definition Required
P29	1918	Screw, Serial Plates
P30	63035	FASTENER ASSEMBLY
P31	component parts:	3048 Bolt Expander
P32		9003 Washer
P33		3005 Nut Expander
P34		H715-1 Jaw Expander
P36	69208	Coin Box, Sealed, DE- Further Definition Required
P37	2302-32	Key, Coin Box, DE SW Brass-Further Definition Required
P36	69208-2	Coin Box, Sealed, Illinois- Further Definition Required
P37	2302	Key, Coin Box, Illinois- Further Definition Required
P38	73378-226 **	DOOR ASSEMBLY
P39	component parts:	73345-10 Door, Lower Iron Housing
P40		3308 Bumper, Rubber
P41		3331-2 SCREW, 10-32 X 1/2 SCHS
P42		3381 Plug, Lock Shield
P43		3317-Z1 Barrel, Lock
P44		63325 Lock Assembly, DE- Further Definition Required
P45		3378 Retainer, lock
P46		73372 Link & Bracket Door Assembly
P47		73341 Bolt, Lock Assembly
P48		3326-1 Bracket, Retainer Lock Bolt
P49		3302 Cam, Lock
P50		3329 Lockwasher
P51		2016 Nut
P52	3350	Decal- Door Instruction Plate- Further Definition Required
P53	73373	Retainer, Coin Box Assembly
P54	73371-1	Bracket, Left, Door Assembly
P55	73371-2	Bracket, Right, Door Assembly
P41	3331-2	Screw, 10-32 X 1/2
P56	62058-4	Key, Long, Brass- Further Definition Required

FOR METERS MANUFACTURED WITH LORI LOCK (SPECIFY COMBINATION):

69110	Lock, Lori- Further Definition Required
9111	Key, Lori Lock- Further Definition Required