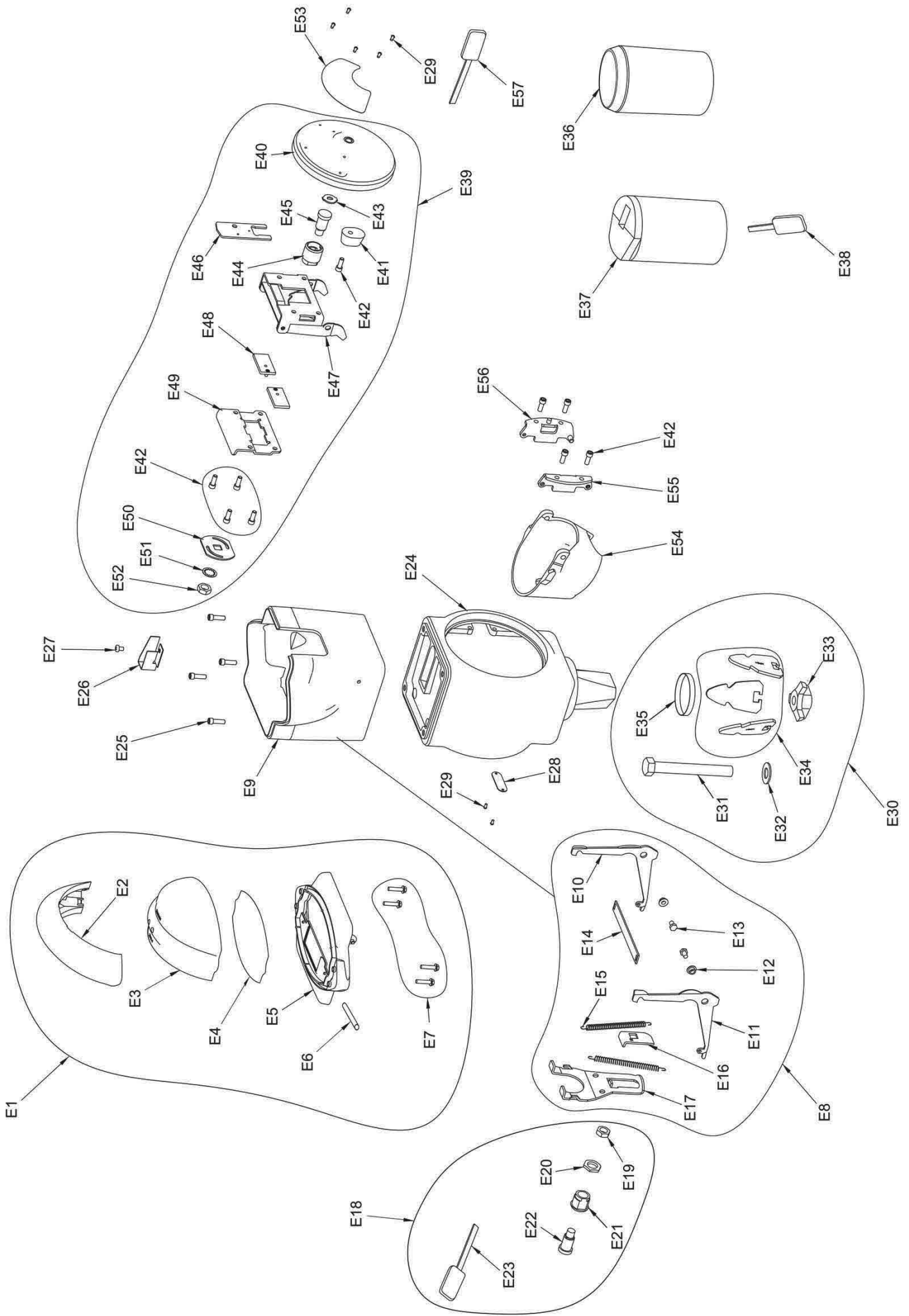


DUNCAN PARKING TECHNOLOGIES MODEL 70 SINGLE SPACE PARKING METER HOUSING  
PARTS LIST "E"



**DUNCAN PARKING TECHNOLOGIES, INC.**  
**MODEL 70 SINGLE PARKING METER HOUSING**  
**PARTS PRICE LIST "E"**

REF NO.	PART NUMBER	DESCRIPTION
E1	<b>62032-1</b> **	CAP, HOUSING ASSEMBLY WITH ROUND DOME
E2	component parts:	<b>2043-1</b> Strap, Housing Cap
E3		<b>8125</b> Dome, Round
E3		<b>8130</b> Dome, Next Gen
E7		<b>2034-1</b> Screw, Housing Cap
E5		<b>66032</b> Cap, Housing Sub-Assembly
E6	component parts:	<b>2033</b> Hing Pin
E4		<b>2395</b> Gasket, Dome
E1	<b>62032-2</b> **	CAP, HOUSING ASSEMBLY WITH FLAT DOME
E3	includes:	<b>2041-4</b> Dome, Flat (OTHER PARTS SAME AS 62032-1)
E8	<b>62199-1</b> **	MECHANISM, HOUSING SUB ASSEMBLY
E9	component parts:	<b>6082-1</b> Housing, Mechanism
E10		<b>2012</b> Link, Right Locking
E11		<b>2013</b> Link, Left Locking
E12		<b>9211</b> Washer, shoulder
E13		<b>2019</b> Screw, Locking Link
E14	<b>2010</b>	Bar, Locking Link
E15	<b>2021</b>	Springs, Locking Link Return
E16	<b>2009</b>	Cam, Housing Lock
E17	<b>2011</b>	Link, Back Housing Lock
E18	<b>2054-H</b>	Lock Assy, Housing- Further Definition Required
E19	component parts:	<b>2016</b> Nut
E20		<b>1927</b> Jamb Nut
E21		<b>2394-Z</b> Lock Barrel
E22		<b>63325</b> Lock Assembly SW, DE- Further Definition Required
E23	<b>62058-2</b>	Key, Short, Brass- Further Definition Required
E24	<b>3300-17</b> **	Housing, Iron Lower Unit Model 70
E25	<b>3331-3</b>	Screw
E26	<b>3382</b>	Guide, Coin
E27	<b>9043-1</b>	Screw, Coin Guide
E29	<b>1918</b>	Screw
E30	<b>63035</b>	FASTENER ASSEMBLY
E31	component parts:	<b>3048</b> Bolt Expander
E32		<b>9003</b> Washer
E33		<b>3005</b> Nut Expander
E34		<b>H715-1</b> Jaw Expander
E36	<b>2065-4</b>	Coin Box, Open
E37	<b>69200-101</b>	Coin Box, Sealed, DE- Further Definition Required
E38	<b>2302-32</b>	Key, Coin Box, DE Brass- Further Definition Required
E37	<b>69200-110</b>	Coin Box, Sealed, Illinois- Further Definition Required
E38	<b>2302</b>	Key, Coin Box, Illinois- Further Definition Required
E39	<b>73378-26</b> **	DOOR ASSEMBLY
E40	component parts:	<b>73345-10</b> Door, Lower Iron Housing
E41		<b>3308</b> Bumper, Rubber
E42		<b>3331-2</b> Screw, 10-32 X 1/2 SCHS
E43		<b>3381</b> Plug, Lock Shield
E44		<b>3317-Z1</b> Barrel, Lock
E45		<b>63325</b> Lock Assembly, DE- Further Definition Required
E46		<b>3378</b> Retainer, lock
E47		<b>73377-1</b> Bracket, Door Link Assembly
E48		<b>73341</b> Assembly, Lock Bolt
E49		<b>3326-1</b> Bracket, Retainer Lock Bolt
E50		<b>3302</b> Cam, Lock
E51		<b>3329</b> Lockwasher
E52		<b>2016</b> Nut
E53	<b>3350</b>	Decal- Door Instruction Plate- Further Definition Required
E54	<b>73311-5</b>	Retainer, coin box assembly
E55	<b>73305-1</b>	Bracket, Left, Door Assembly
E56	<b>73305-2</b>	Bracket, Right, Door Assembly
E42	<b>3331-2</b>	Screw, Door Bracket
E57	<b>62058-4</b>	Key, Long, Brass- Further Definition Required
<b>FOR METERS MANUFACTURED WITH LORI LOCK (SPECIFY COMBINATION):</b>		
	<b>69110</b>	Lock, Lori- Further Definition Required
	<b>9111</b>	Key, Lori Lock- Further Definition Required