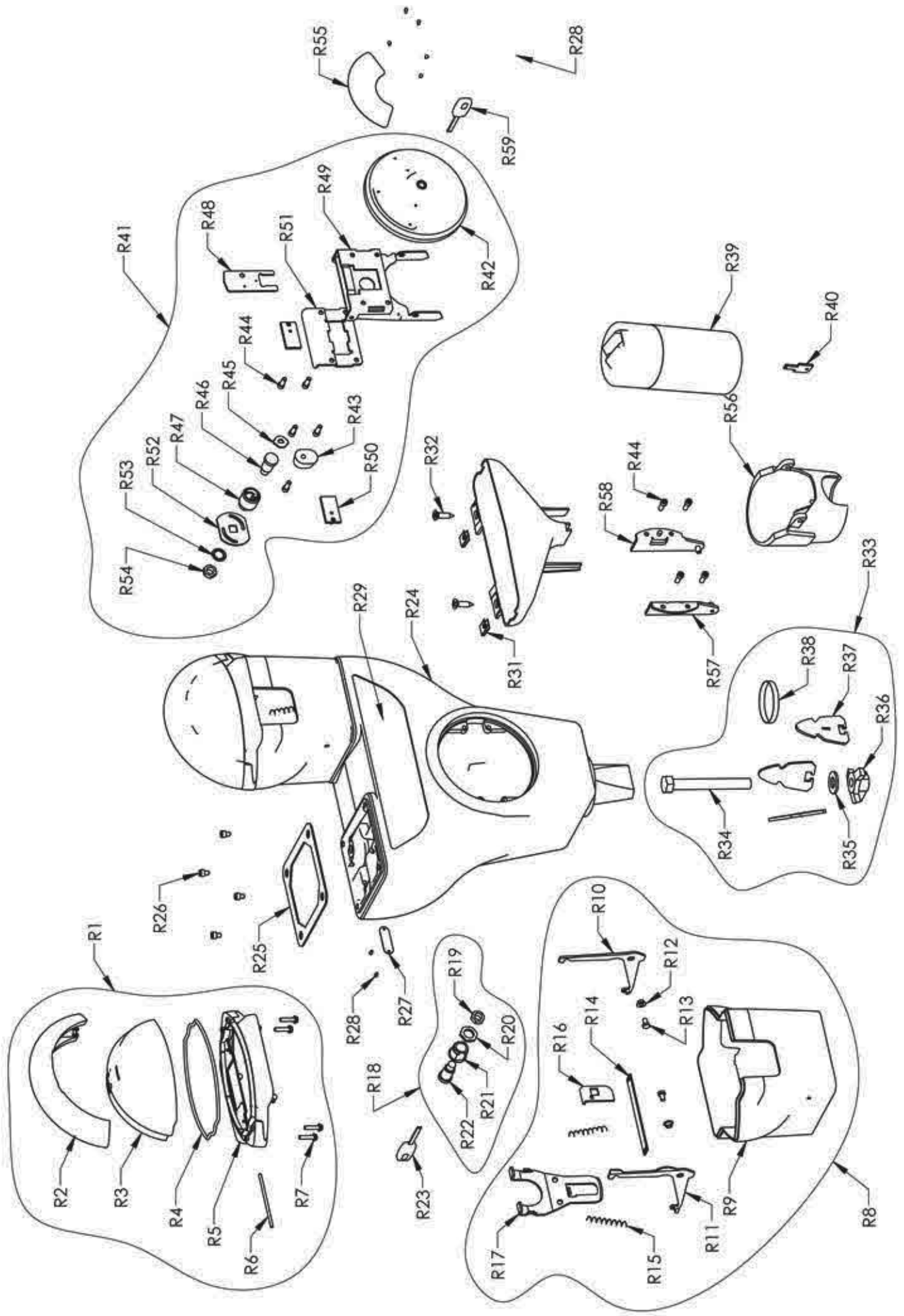


# DUNCAN PARKING TECHNOLOGIES MODEL 90 DUPLEX PARKING METER HOUSING PARTS LIST "R"



**DUNCAN PARKING TECHNOLOGIES, INC.**  
**MODEL 90 DUPLEX PARKING METER HOUSING**  
**PARTS PRICE LIST "R"**

<b>REF NO.</b>	<b>PART NUMBER</b>	<b>DESCRIPTION</b>
R1	<b>62032-1</b> **	CAP, HOUSING ASSEMBLY WITH ROUND DOME
R2	component parts:	<b>2043-1</b> Strap, Housing Cap
R3		<b>8125</b> Dome, Round
R3		<b>8130</b> Dome, Next Gen
R7		<b>2034-1</b> Screw, Housing Cap
R5		<b>66032</b> Cap, Housing Sub-Assembly
R6	component parts:	<b>2033</b> Hing Pin
R4		<b>2395</b> Gasket, Dome
R1	<b>62032-2</b> **	CAP, HOUSING ASSEMBLY WITH FLAT DOME (OTHER PARTS SAME AS 62032-1)
R8	<b>62199-1</b> **	MECHANISM, HOUSING SUB ASSEMBLY
R9	component parts:	<b>6082-1</b> Housing, Mechanism
R10		<b>2012</b> Link, Right Locking
R11		<b>2013</b> Link, Left Locking
R12		<b>9211</b> Washer, shoulder
R13		<b>2019</b> Screw, Locking Link
R14	<b>2010</b>	Bar, Locking Link
R15	<b>2021</b>	Springs, Locking Link Return
R16	<b>2009</b>	Cam, Housing Lock
R17	<b>2011</b>	Link, Back Housing Lock
R18	<b>2054-H</b>	Lock Assy, Housing- Further Definition Required
R19	component parts:	<b>2016</b> Nut
R20		<b>1927</b> Jamb Nut
R21		<b>2394-Z</b> Lock Barrel
R22		<b>63325</b> Lock Assembly, DE- Further Definition Required
R23	<b>62058-2</b>	Key, Mech, Brass- Further Definition Required
R24	<b>9050-1</b> **	Housing, Iron, Lower Model 90 Duplex
R25	<b>9225</b>	Gasket, Housing Plate
R26	<b>3331-3</b>	Screw
R27	<b>1705</b>	Plate, Serial Number-Further Definition Required
R28	<b>1918</b>	Screw, Serial Plates
R29	<b>9037</b>	Decal, Instruction Plate, Housing
R30	<b>9009</b>	Chute, Plastic, Coin (*Need 2 Speed Nut Clips and 2 Screws per Coin Chute)
R31	<b>9008</b>	Speed Nut Clip (need 2 per chute)
R32	<b>9005-1</b>	Screw ( need 2 per chute)
R33	<b>63035</b>	FASTENER ASSEMBLY
R34	component parts:	<b>3048</b> Bolt Expander
R35		<b>9003</b> Washer
R36		<b>3005</b> Nut Expander
R37		<b>H715-1</b> Jaw Expander
R39	<b>69208</b>	Coin Box, Sealed, DE- Further Definition Required
R40	<b>2302-2</b>	Key, Coin Box, DE SW Brass-Further Definition Required
R39	<b>69208-2</b>	Coin Box, Sealed, Illinois- Further Definition Required
R40	<b>2302</b>	Key, Coin Box, Illinois- Further Definition Required
R41	<b>73378-226</b> **	DOOR ASSEMBLY
R42		<b>73345-10</b> Door, Lower Iron Housing
R43		<b>3308</b> Bumper, Rubber
R44		<b>3331-2</b> SCREW, 10-32 X 1/2 SCHS
R45		<b>3381</b> Plug, Lock Shield
R46		<b>63325</b> Lock Assembly, DE- Further Definition Required
R47		<b>3317-Z1</b> Barrel, Lock
R48		<b>3378</b> Retainer, lock
R49		<b>73372</b> Link & Bracket Door Assembly
R50		<b>73341</b> Bolt, Lock Assembly
R51		<b>3326-1</b> Bracket, Retainer Lock Bolt
R52		<b>3302</b> Cam, Lock
R53		<b>3329</b> Lockwasher
R54		<b>2016</b> Nut
R55	<b>3350</b>	Decal- Door Instruction Plate- Further Definition Required
R56	<b>73373</b>	Retainer, Coin Box Assembly
R57	<b>73371-1</b>	Bracket, Left, Door Assembly
R58	<b>73371-2</b>	Bracket, Right, Door Assembly
R44	<b>3331-2</b>	Screw, 10-32 X 1/2
R59	<b>62058-4</b>	Key, Long, Brass- Further Definition Required
<b>FOR METERS MANUFACTURED WITH LORI LOCK (SPECIFY COMBINATION):</b>		
	<b>69110</b>	Lock, Lori- Further Definition Required
	<b>9111</b>	Key, Lori Lock- Further Definition Required