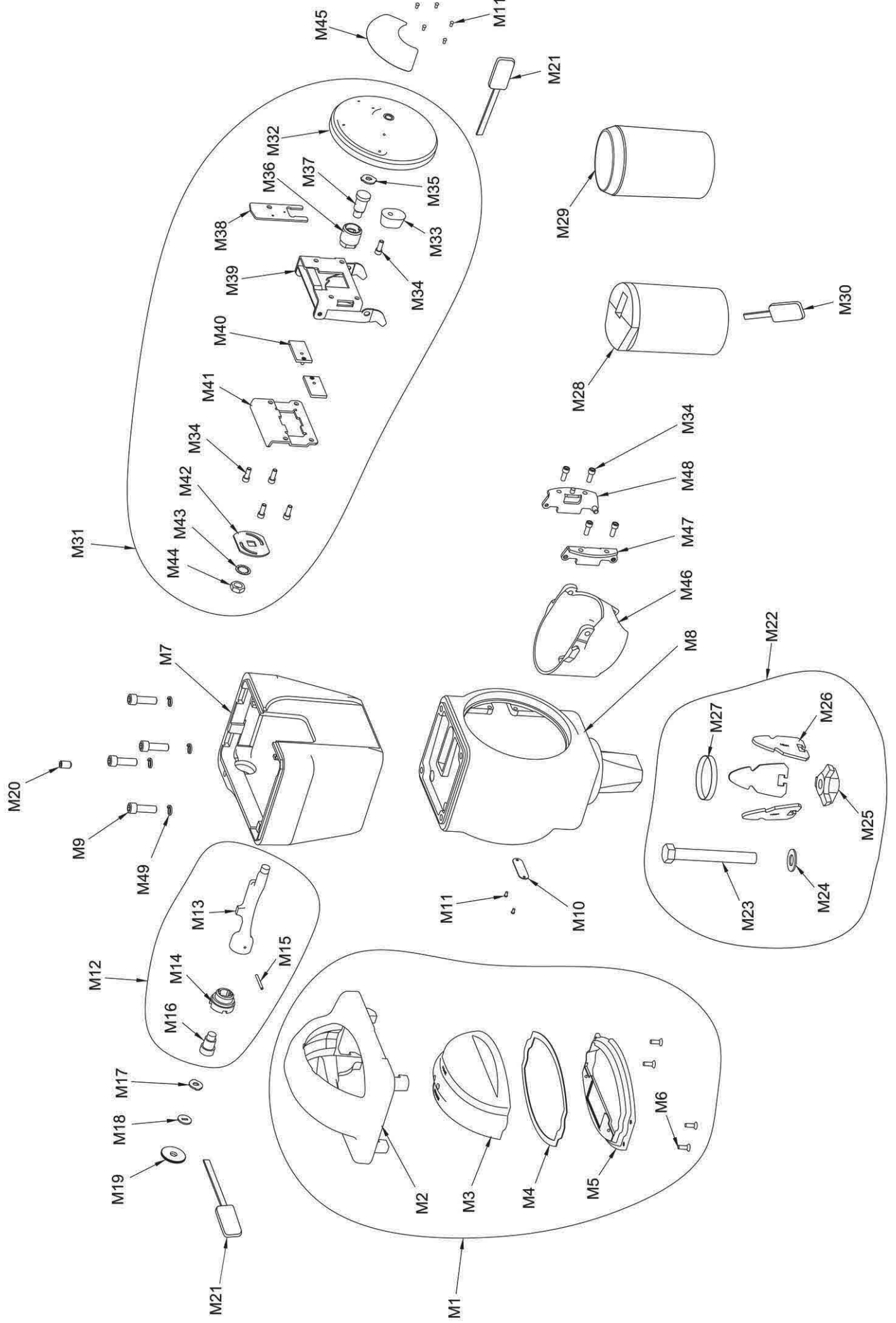


DUNCAN PARKING TECHNOLOGIES MODEL 80 SINGLE SPACE PARKING METER HOUSING  
PARTS LIST "M"



**DUNCAN PARKING TECHNOLOGIES, INC.**  
**MODEL 80 SINGLE PARKING METER HOUSING**  
**PARTS PRICE LIST "M"**

<b>REF NO.</b>	<b>PART NUMBER</b>	<b>DESCRIPTION</b>
M1	<b>79016</b> **	Cap, Iron Upper Housing Assembly, Round Dome
M2	component parts:	<b>9016-2</b> Cap, Iron, Upper Housing
M3		<b>8125</b> Dome, Round
M3		<b>8130</b> Dome, Next Gen
M4		<b>9018</b> Gasket, dome
M5		<b>79019</b> Retainer, Dome
M6		<b>1046-30</b> Screw
M1	<b>79016-4</b> **	Cap, Iron Upper Housing Assembly, Flat Dome (OTHER PARTS SAME AS 79016)
M7	<b>9017-6</b> **	Housing, Iron, Mech
M8	<b>3300-20</b> **	Housing, Iron, Lower Model 80
M9	<b>9025-9</b>	Bolt, Hex Socket
M49	<b>1011-1</b>	Lockwasher
M10	<b>1705</b>	Plate, Serial Number- Further Definition Required
M11	<b>1918</b>	Screw, Serial plate
M12	<b>79001-1</b>	Rod, Mech Locking Assembly- Further Definition Required
M13	component parts:	<b>9020</b> Rod, Locking
M14		<b>9023-1</b> Barrel, Lock
M15		<b>9024</b> Pin, Roll
M16		<b>75030</b> Lock, DE, Mech-Further Definition Required
M17	<b>3381-1</b>	Plug, Lock Shield
M18	<b>3327</b>	Plug, Lock Shield, Secondary
M19	<b>9022</b>	Plug, Lock Shield, Primary
M20	<b>9027-1</b>	Screw
M50	<b>9095</b>	Bar Locking Shield
M21	<b>62058-4</b>	Key, Long, Brass- Further Definition Required
M22	<b>63035</b>	FASTENER ASSEMBLY
M23	component parts:	<b>3048</b> Bolt Expander
M24		<b>9003</b> Washer
M25		<b>3005</b> Nut Expander
M26		<b>H715-1</b> Jaw Expander
M28	<b>2065-4</b>	Coin Box, Open
M29	<b>69200-101</b>	SEALED COIN BOX (SPECIFY COMBINATION)
M30	<b>2302-2</b>	STEEL COIN BOX KEY (SW) (SPECIFY COMBINATION)
M29	<b>69200-110</b>	COIN BOX ASSM-ILL (SPECIFY COMBINATION)
M30	<b>2302</b>	COIN BOX KEY-L SERIES (SPECIFY COMBINATION)
M31	<b>73378-26</b> **	VIP DOOR ASSEMBLY (DE-SW)
M32	component parts:	<b>73345-10</b> Door, Lower Iron Housing
M33		<b>3308</b> Bumper, Rubber
M34		<b>3331-2</b> SCREW, 10-32 X 1/2 SCHS
M35		<b>3381</b> Plug, Lock Shield
M36		<b>3317-Z1</b> Barrel, Lock
M37		<b>63325</b> Lock Assembly, DE- Further Definition Required
M38		<b>3378</b> Retainer, lock
M39		<b>73377-1</b> Bracket, Door Link Assembly
M40		<b>73341</b> Assembly, Lock Bolt
M41		<b>3326-1</b> Bracket, Retainer Lock Bolt
M42		<b>3302</b> Cam, Lock
M43		<b>3329</b> Lockwasher
M44		<b>2016</b> Nut
M45	<b>3350</b>	Decal- Door Instruction Plate- Further Definition Required
M46	<b>73311-5</b>	Retainer, coin box assembly
M47	<b>73305-1</b>	Bracket, Left, Door Assembly
M48	<b>73305-2</b>	Bracket, Right, Door Assembly
M34	<b>3331-2</b>	Screw, Door Bracket
M21	<b>62058-4</b>	Key, Long, Brass- Further Definition Required
<b>FOR METERS MANUFACTURED WITH LORI LOCK (SPECIFY COMBINATION):</b>		
	<b>69110</b>	Lock, Lori- Further Definition Required
	<b>9111</b>	Key, Lori Lock- Further Definition Required