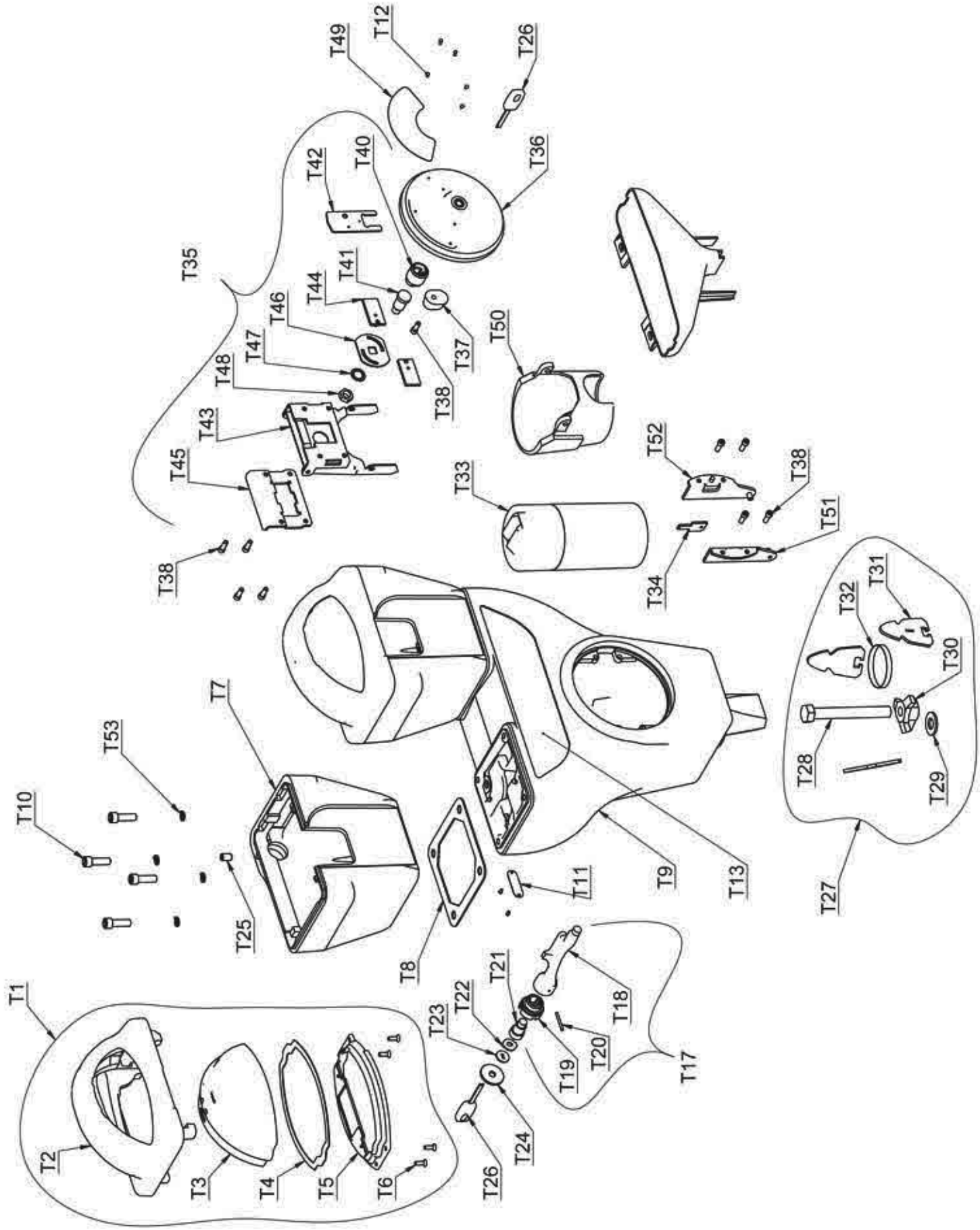


**DUNCAN PARKING TECHNOLOGIES MODEL 95 DUPLEX PARKING METER HOUSING**  
**PARTS LIST "T"**



**DUNCAN PARKING TECHNOLOGIES, INC.**  
**MODEL 95 DUPLEX PARKING METER HOUSING**  
**PARTS PRICE LIST "T"**

<b>REF NO.</b>	<b>PART NUMBER</b>	<b>DESCRIPTION</b>
T1	<b>79016</b> **	Cap, Iron Upper Housing Assembly, Round Dome
T2	component parts:	<b>9016-2</b> Cap, Iron, Upper Housing
T3		<b>8125</b> Dome, Round
T3		<b>8130</b> Dome, Next Gen
T4		<b>9018</b> Gasket, Dome
T5		<b>79019</b> Retainer, Dome
T6		<b>1046-30</b> Screw
T1	<b>79016-4</b> **	Cap, Iron Upper Housing Assembly, Flat Dome (OTHER PARTS SAME AS 79016)
T7	<b>9017-6</b> **	Housing, Iron, Mech
T8	<b>9225</b>	Gasket, Housing Plate
T9	<b>9050-3</b> **	Housing, Iron, Lower Model 95 Duplex
T10	<b>9025-9</b>	Bolt, Hex Socket
T53	<b>1011-1</b>	Lockwasher , 5/16
T11	<b>1705</b>	Plate, Serial Number-Further Definition Required
T12	<b>1918</b>	Screw, Serial Plates
T13	<b>9037</b>	Decal, Instruction Plate, Housing
T14	<b>9009</b>	Chute, Plastic, Coin (*Need 2 Speed Nut Clips and 2 Screws Per Coin Chute)
T15	<b>9008</b>	Speed Nut Clip (Need 2 Per Chute)
T16	<b>9005-1</b>	Screw (need 2 per chute)
T17	<b>79001-1</b>	Rod, Mech Locking Assembly- Further Definition Required
T18	component parts:	<b>9020</b> Rod, Locking
T19		<b>9023-1</b> Barrel, Lock
T20		<b>9024</b> Pin, Roll
T21		<b>75030</b> Lock, DE, Mech-Further Definition Required
T22	<b>3381-1</b>	Plug, Lock Shield
T23	<b>3327</b>	Plug, Lock Shield, Secondary
T24	<b>9022</b>	Plug, Lock Shield, Primary
T25	<b>9027-1</b>	Screw
T54	<b>9095</b>	Bar, Locking Shield
T14	<b>9009</b>	Chute, Plastic, Coin (*Need 2 Speed Nut Clips and 2 Screws per Coin Chute)
T15	<b>9008</b>	Speed Nut Clip (need 2 per chute)
T16	<b>9005-1</b>	Screw ( need 2 per chute)
T27	<b>63035</b>	FASTENER ASSEMBLY
T28	component parts:	<b>3048</b> Bolt, Expander
T29		<b>9003</b> Washer
T30		<b>3005</b> Nut, Expander
T31		<b>H715-1</b> Jaw, Expander
T33	<b>69208</b>	Coin Box, Sealed, DE- Further Definition Required
T34	<b>2302-2</b>	Key, Coin Box, DE SW Brass-Further Definition Required
T33	<b>69208-2</b>	Coin Box, Sealed, Illinois- Further Definition Required
T34	<b>2302</b>	Key, Coin Box, Illinois- Further Definition Required
T35	<b>73378-226</b> **	DOOR ASSEMBLY
T36		<b>73345-10</b> Door, Lower Iron Housing
T37		<b>3308</b> Bumper, Rubber
T38		<b>3331-2</b> SCREW, 10-32 X 1/2 SCHS
T39		<b>3381</b> Plug, Lock Shield
T40		<b>3317-Z1</b> Barrel, Lock
T41		<b>63325</b> Lock Assembly, DE- Further Definition Required
T42		<b>3378</b> Retainer, lock
T43		<b>73372</b> Link & Bracket Door Assembly
T44		<b>73341</b> Bolt, Lock Assembly
T45		<b>3326-1</b> Bracket, Retainer Lock Bolt
T46		<b>3302</b> Cam, Lock
T47		<b>3329</b> Lockwasher
T48		<b>2016</b> Nut
T49	<b>3350</b>	Decal- Door Instruction Plate- Further Definition Required
T50	<b>73373</b>	Retainer, Coin Box Assembly
T51	<b>73371-1</b>	Bracket, Left, Door Assembly
T52	<b>73371-2</b>	Bracket, Right, Door Assembly
T38	<b>3331-2</b>	Screw, 10-32 X 1/2
T26	<b>62058-4</b>	Key, Long, Brass- Further Definition Required
<b>FOR METERS MANUFACTURED WITH LORI LOCK (SPECIFY COMBINATION):</b>		
	<b>69110</b>	Lock, Lori- Further Definition Required
	<b>9111</b>	Key, Lori Lock- Further Definition Required